

GROUND FLOOR

GROUND FLOOR: 1636 ft²

Scale in feet. Indicative only. Dimensions are approximate. All information contained herein is gathered from sources we believe to be reliable. However, we cannot guarantee its accuracy and interested persons should rely on their own inquiries .

8 Middle Pond Lane, Shinnecock

SAUNDERS
A HIGHER FORM OF REALTY

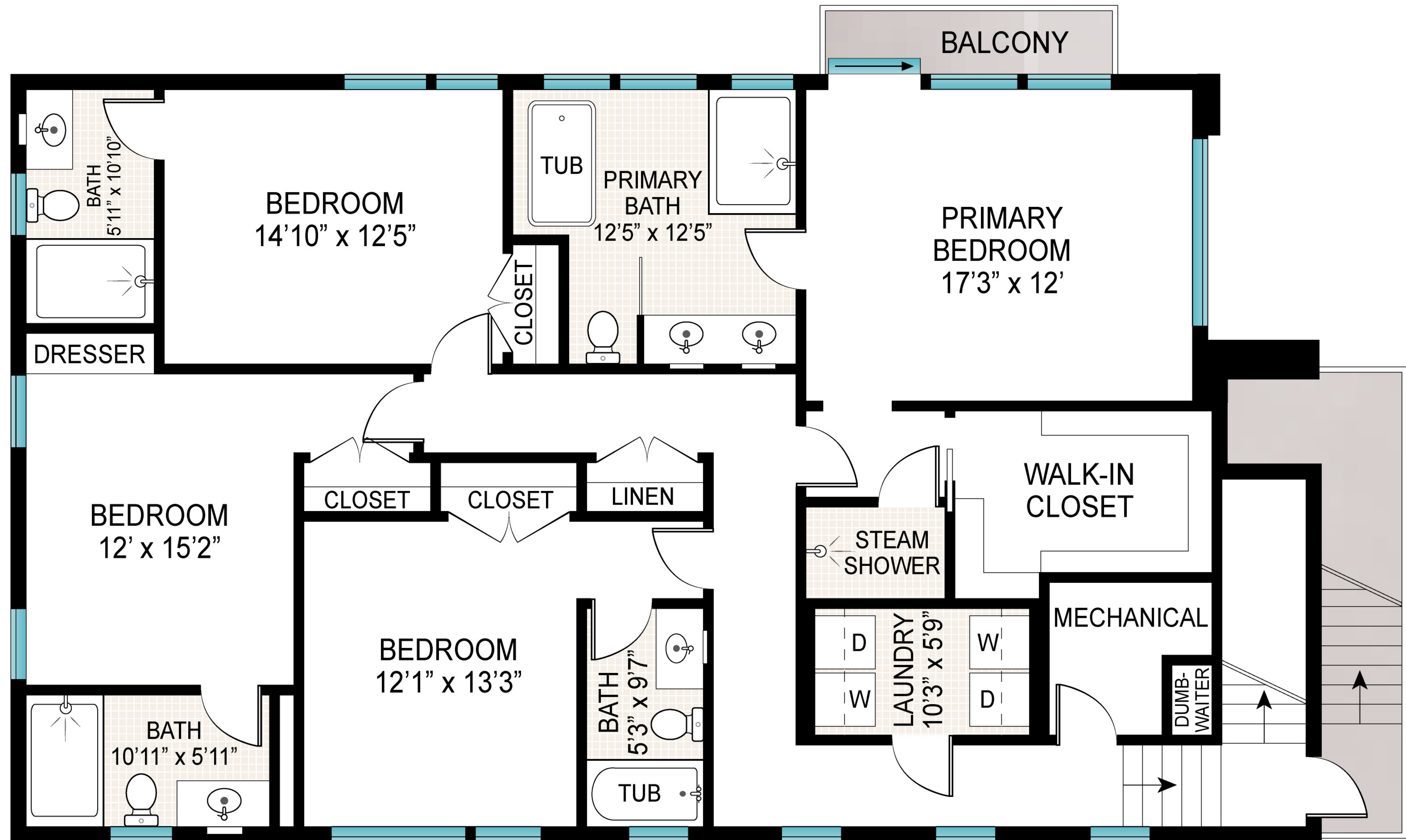


FIRST FLOOR INT: 1539 ft²
FIRST FLOOR EXT: 1883 ft²

Scale in feet. Indicative only. Dimensions are approximate. All information contained herein is gathered from sources we believe to be reliable. However, we cannot guarantee its accuracy and interested persons should rely on their own inquiries .

8 Middle Pond Lane, Shinnecock

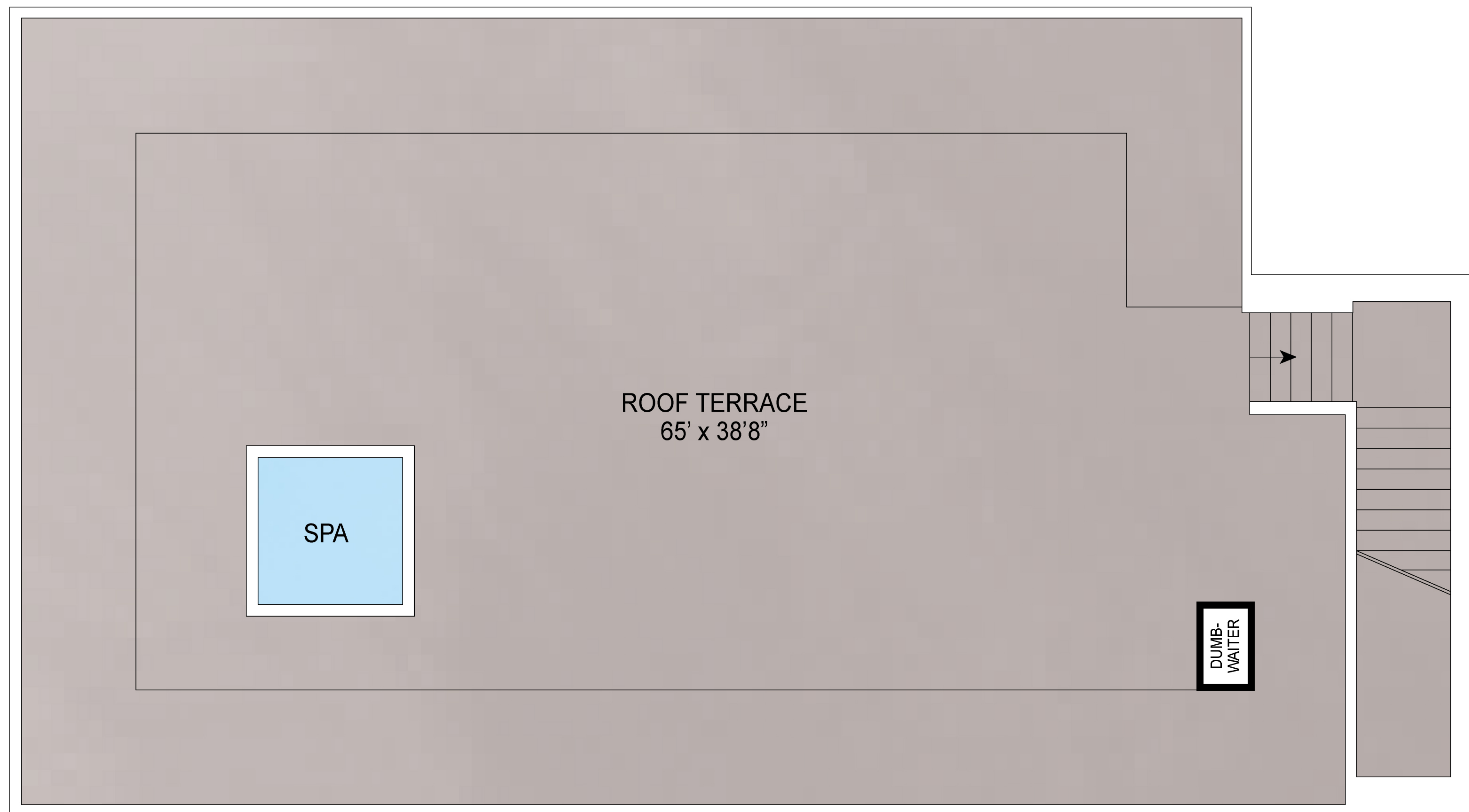
SAUNDERS
A HIGHER FORM OF REALTY



SECOND FLOOR

SECOND FLOOR INT: 1668 ft²
SECOND FLOOR EXT: 118 ft²

Scale in feet. Indicative only. Dimensions are approximate. All information contained herein is gathered from sources we believe to be reliable. However, we cannot guarantee its accuracy and interested persons should rely on their own inquiries.



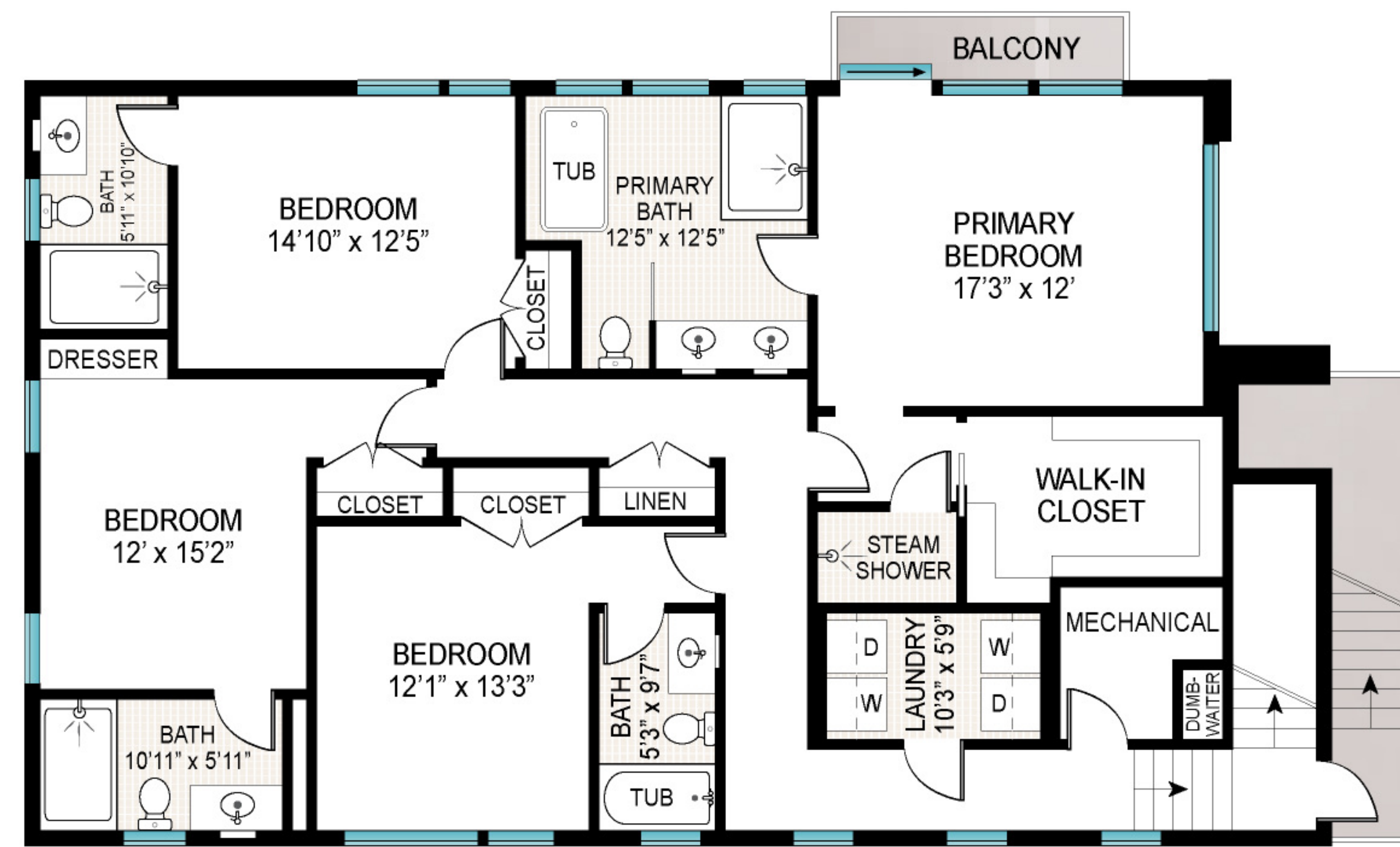
ROOF

ROOF: 2540 ft²

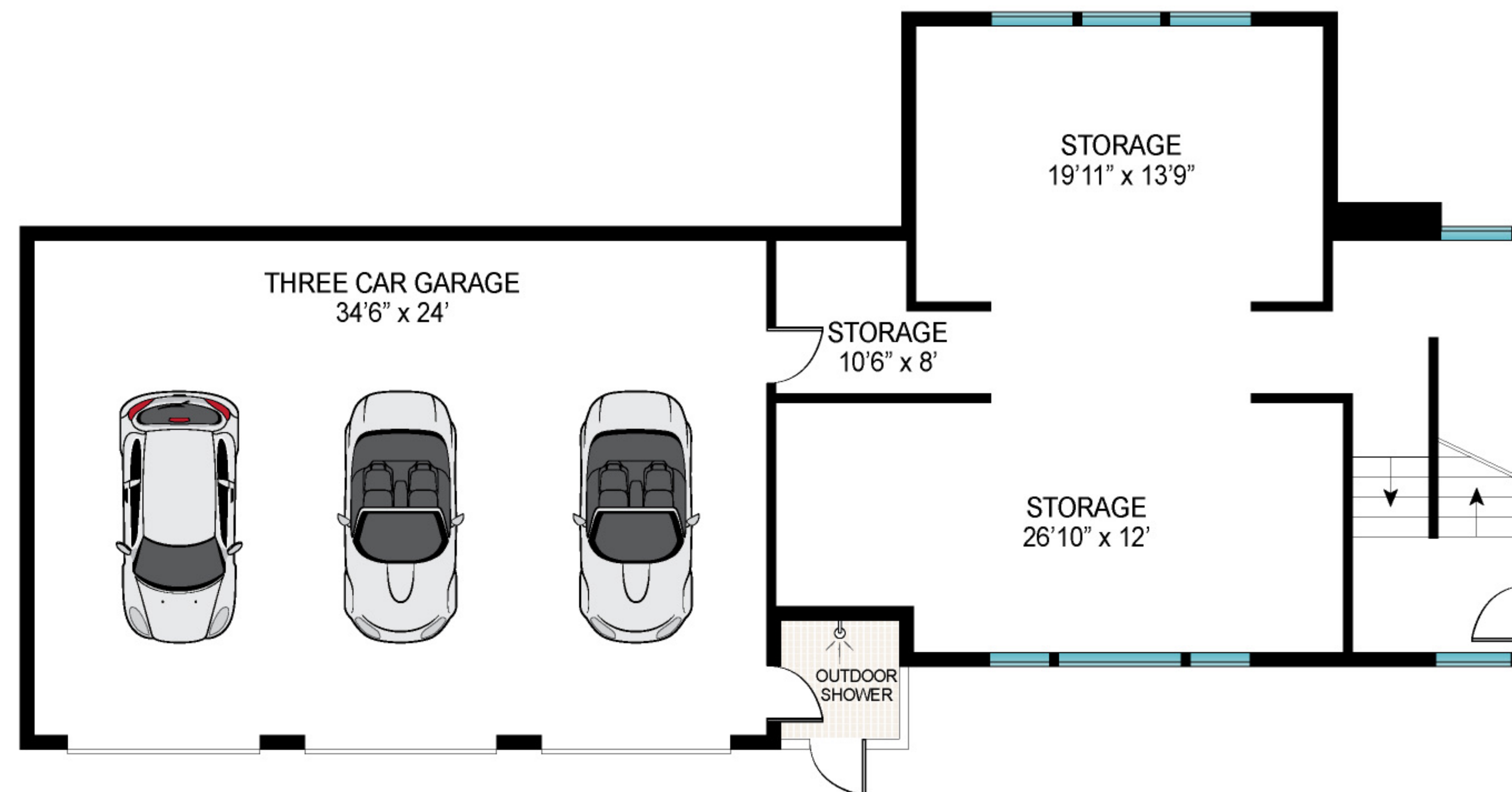
Scale in feet. Indicative only. Dimensions are approximate. All information contained herein is gathered from sources we believe to be reliable. However, we cannot guarantee its accuracy and interested persons should rely on their own inquiries .

8 Middle Pond Lane, Shinnecock

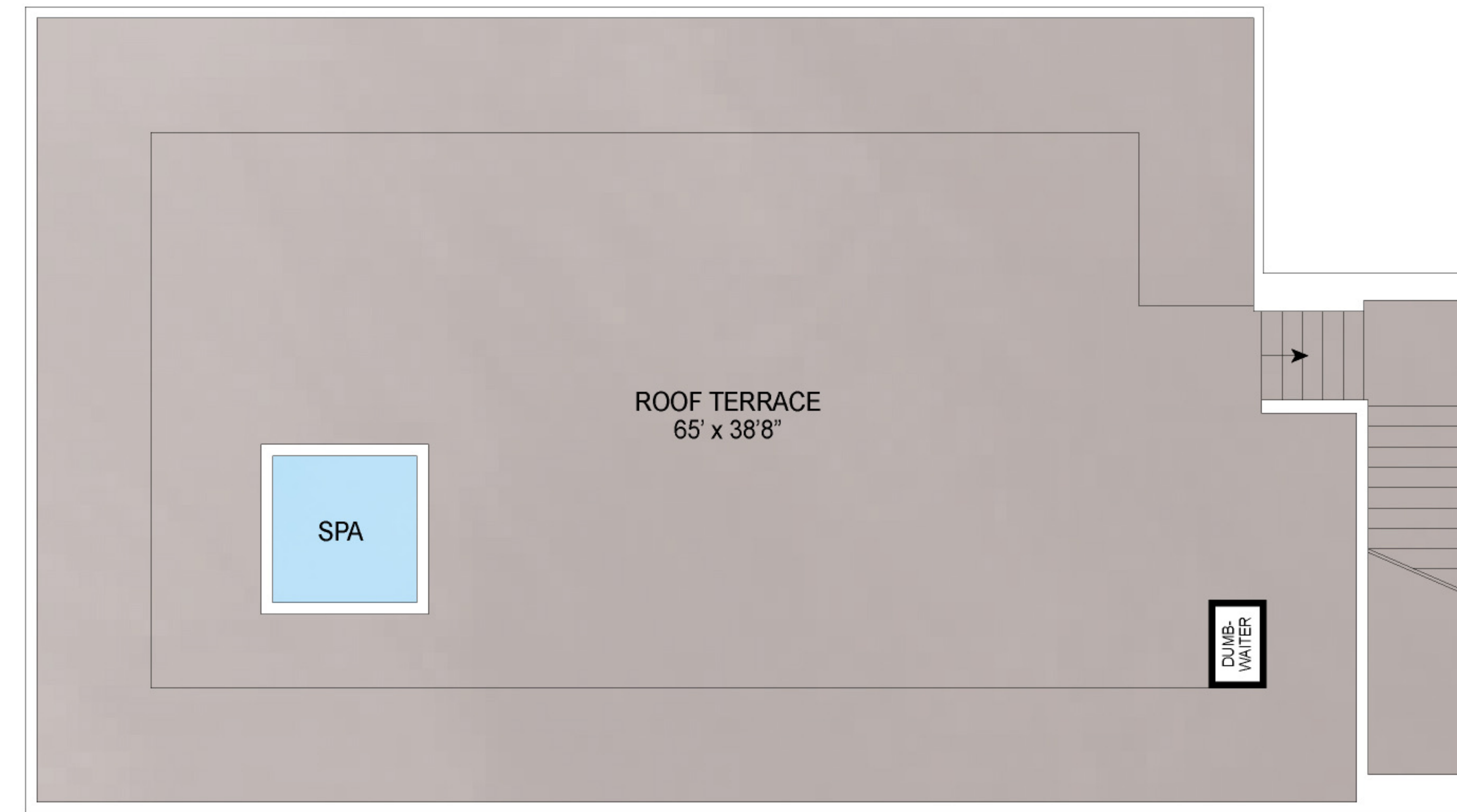
SAUNDERS
A HIGHER FORM OF REALTY



SECOND FLOOR



GROUND FLOOR



ROOF



FIRST FLOOR

GROUND FLOOR: 1636 ft²
 FIRST FLOOR INT: 1539 ft²
 FIRST FLOOR EXT: 1883 ft²
 SECOND FLOOR INT: 1668 ft²
 SECOND FLOOR EXT: 118 ft²
 ROOF: 2540 ft²
 TOTAL INT : 4843 ft²
 TOTAL EXT : 4541 ft²
 TOTAL: 9384 ft²

Scale in feet. Indicative only. Dimensions are approximate. All information contained herein is gathered from sources we believe to be reliable. However, we cannot guarantee its accuracy and interested persons should rely on their own inquiries .

8 Middle Pond Lane, Shinnecock

SAUNDERS
 A HIGHER FORM OF REALTY