

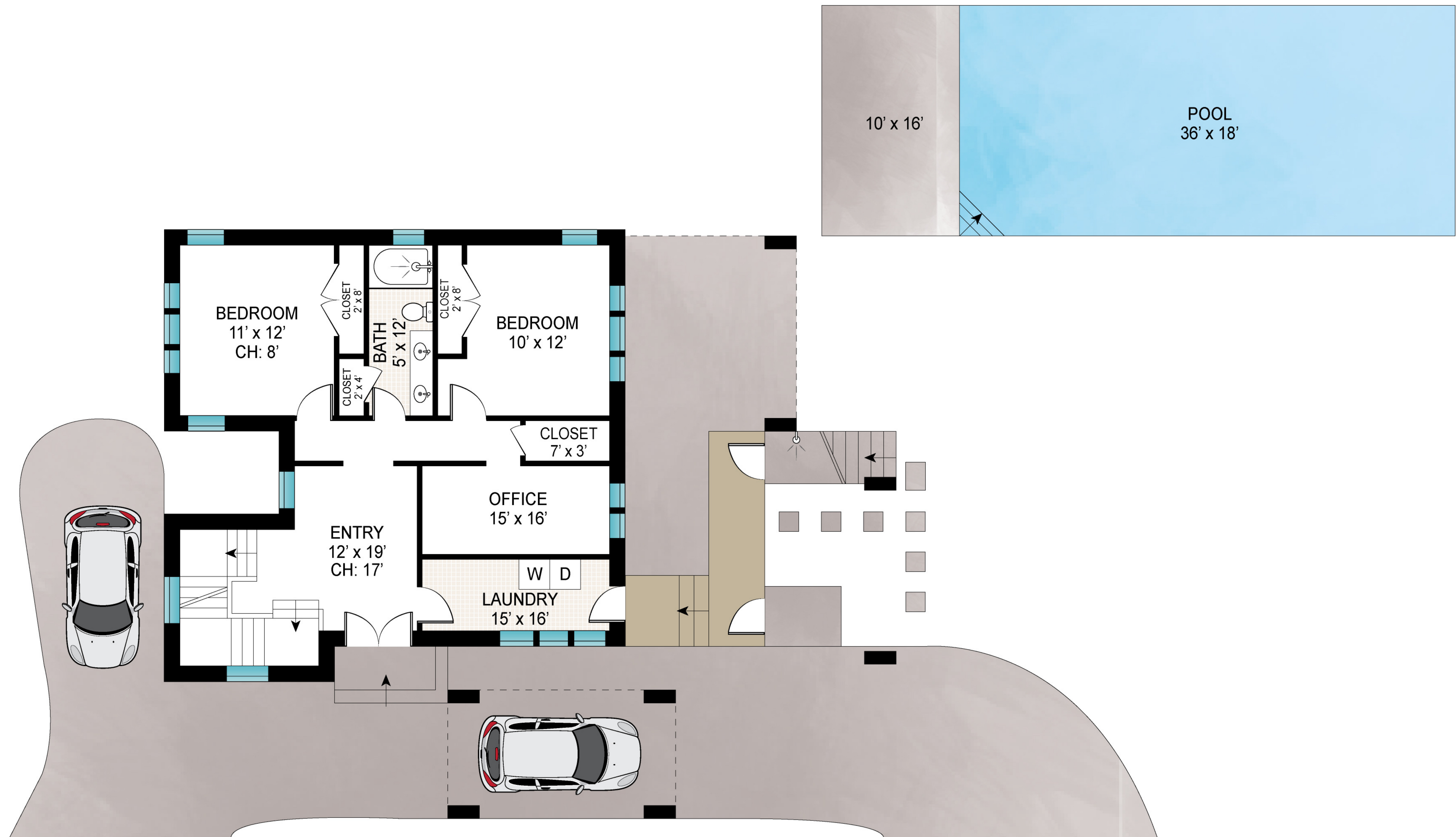
BASEMENT: 1000 SQFT



Scale in feet. Indicative only. Dimensions are approximate. All information contained herein is gathered from sources we believe to be reliable. However, we cannot guarantee its accuracy and interested persons should rely on their own inquiries .

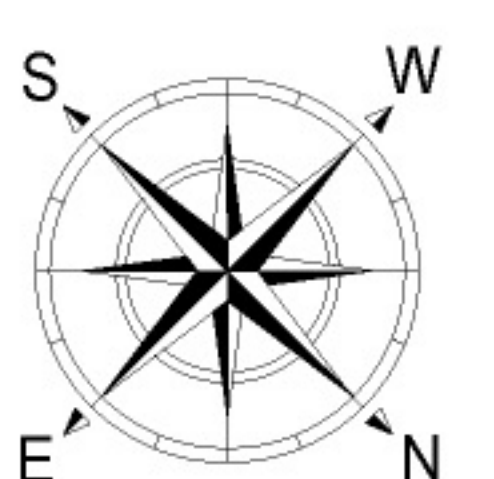
14 Hill Side Lane, East Hampton

SAUNDERS
A HIGHER FORM OF REALTY



FIRST FLOOR
CEILING HEIGHT: 8'

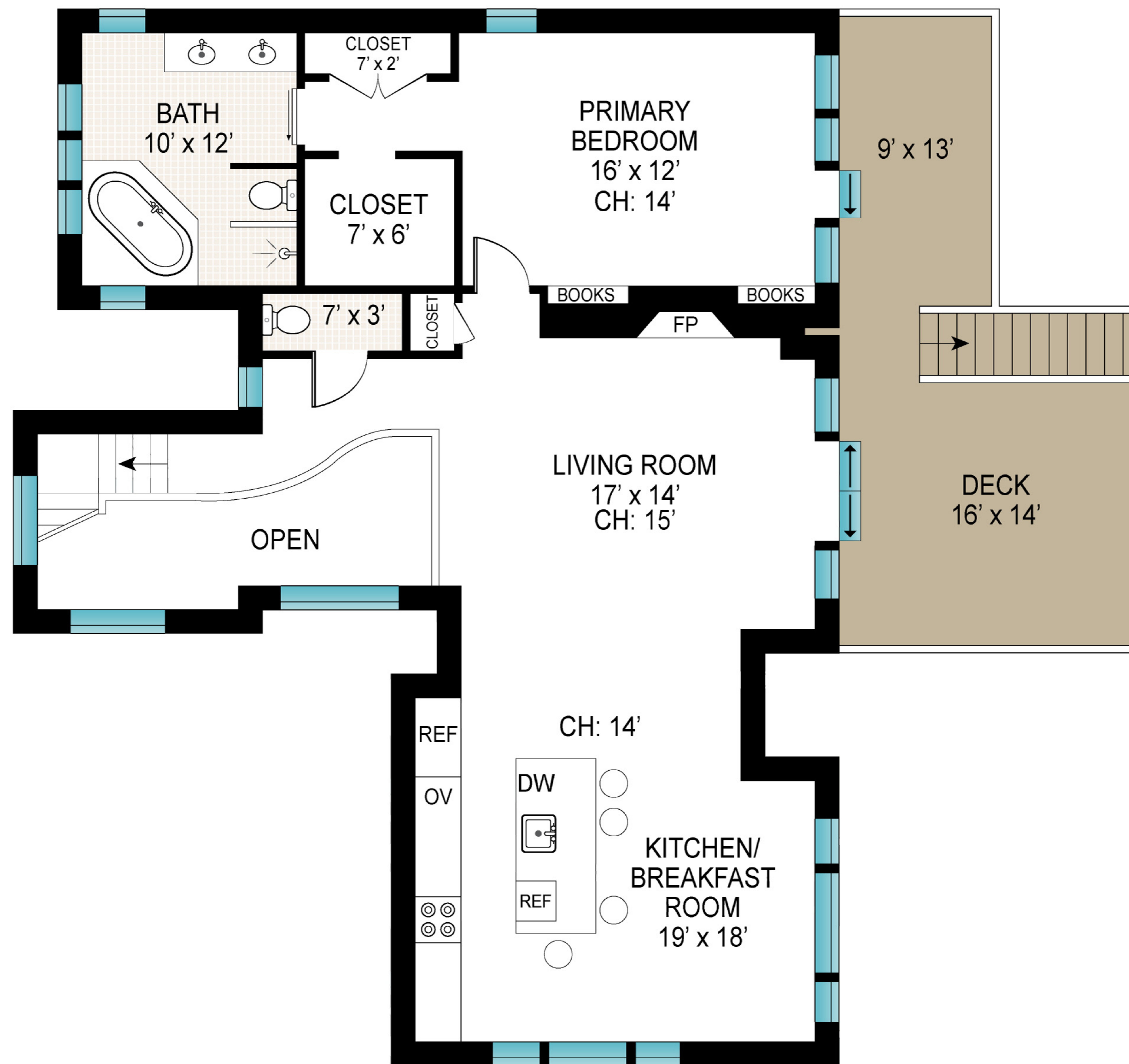
FIRST FLOOR INT: 1000 SQFT
FIRST FLOOR OUT: 300 SQFT
POOL: 650 SQFT



Scale in feet. Indicative only. Dimensions are approximate. All information contained herein is gathered from sources we believe to be reliable. However, we cannot guarantee its accuracy and interested persons should rely on their own inquiries .

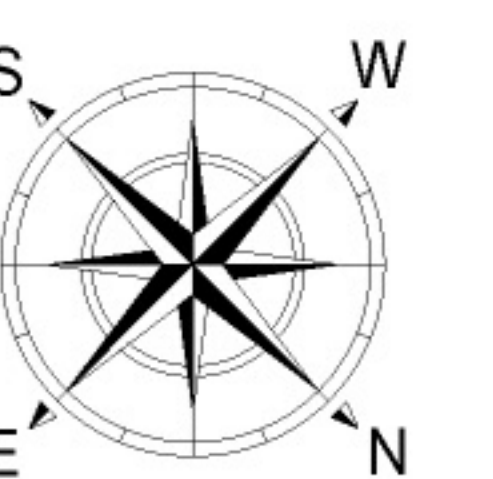
14 Hill Side Lane, East Hampton

SAUNDERS
A HIGHER FORM OF REALTY



SECOND FLOOR
CEILING HEIGHT: 14'

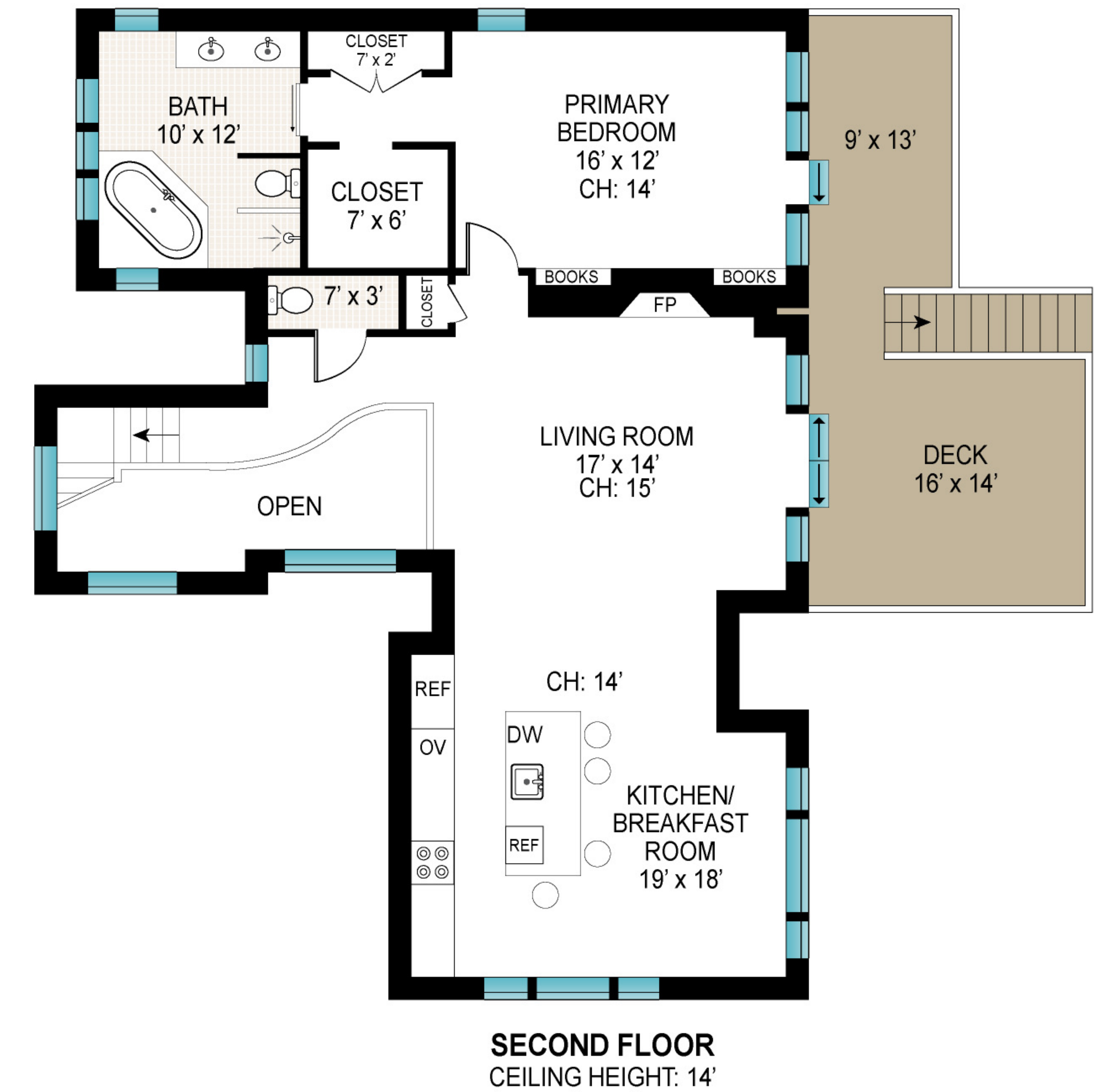
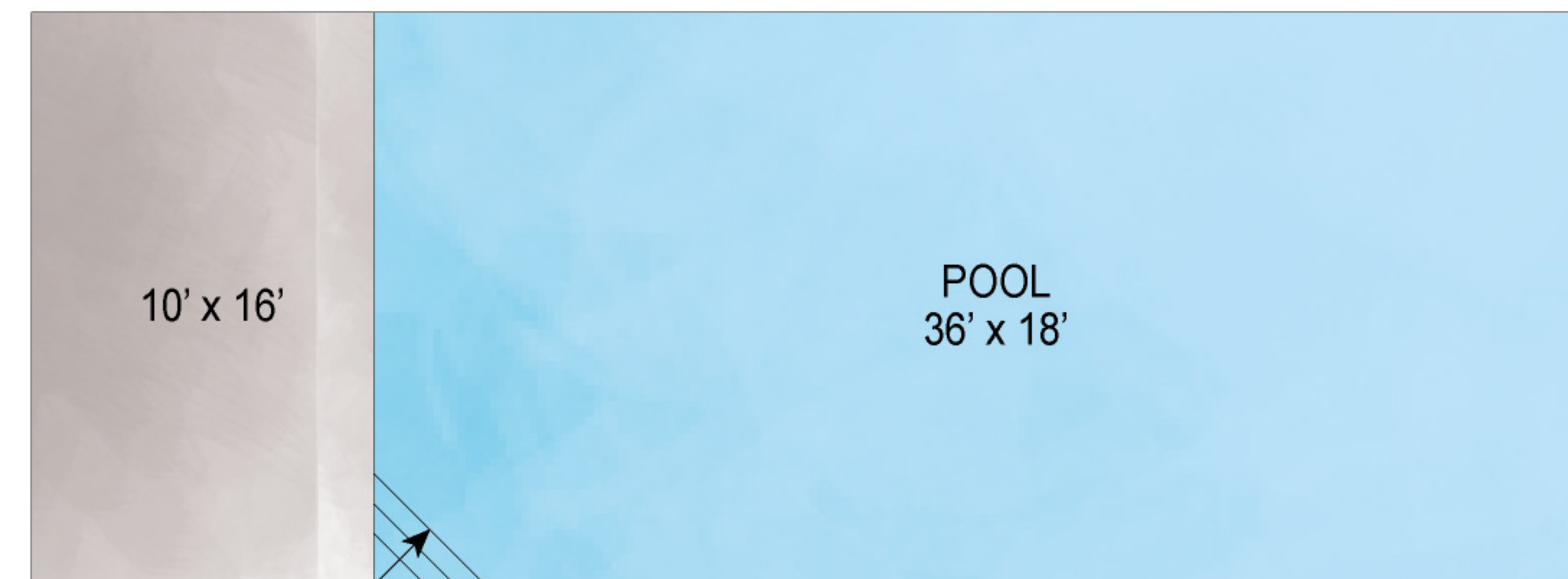
SECOND FLOOR INT: 1300 SQFT
SECOND FLOOR OUT: 400 SQFT



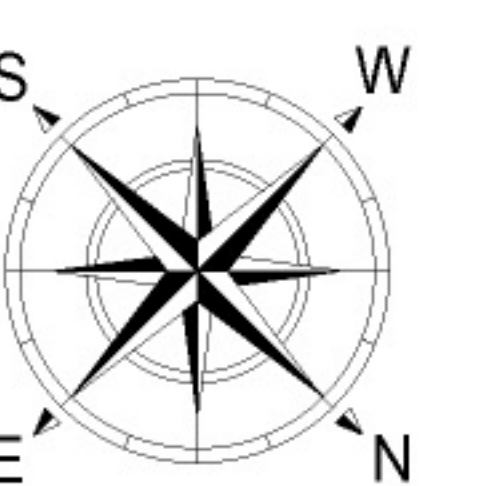
Scale in feet. Indicative only. Dimensions are approximate. All information contained herein is gathered from sources we believe to be reliable. However, we cannot guarantee its accuracy and interested persons should rely on their own inquiries .

14 Hill Side Lane, East Hampton

SAUNDERS
A HIGHER FORM OF REALTY



FIRST FLOOR INT: 1000 SQFT
 FIRST FLOOR OUT: 300 SQFT
 SECOND FLOOR INT: 1300 SQFT
 SECOND FLOOR OUT: 400 SQFT
 BASEMENT: 1000 SQFT
 POOL: 650 SQFT
 TOTAL INT: 3300 SQFT
 TOTAL OUT: 1350 SQFT
 TOTAL: 4650 SQFT



Scale in feet. Indicative only. Dimensions are approximate. All information contained herein is gathered from sources we believe to be reliable. However, we cannot guarantee its accuracy and interested persons should rely on their own inquiries .

14 Hill Side Lane, East Hampton

SAUNDERS
 A HIGHER FORM OF REALTY